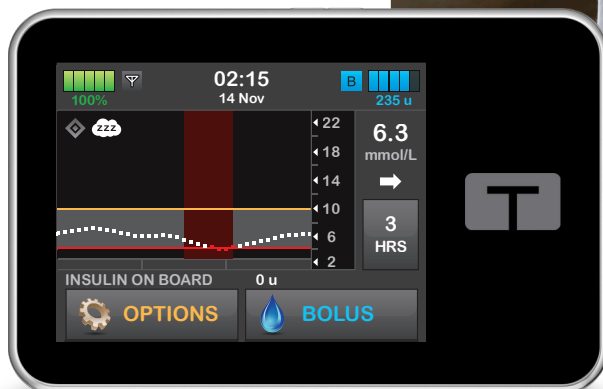


Better Nights, Better Days

t:slim X2 insulin pump with Control-IQ technology

The only automated
insulin delivery system
featuring **Sleep Activity**,
designed to support
**better overnight
glucose control**



The only AID system featuring Sleep Activity

Up to 70%
of T1D patients
experience
poor sleep.^{1,2}

This is often caused by higher overnight glucose variability and the challenges of managing diabetes.

The t:slim X2 insulin pump with Control-IQ technology is the only automated insulin delivery system featuring a dedicated **Sleep Activity** for better overnight glucose control.



Day 1 improvements
in time in range³



Designed for
better overnight
control



Easy to use



Nolan
diagnosed 2017



Immediate
and
Sustained
Results⁴

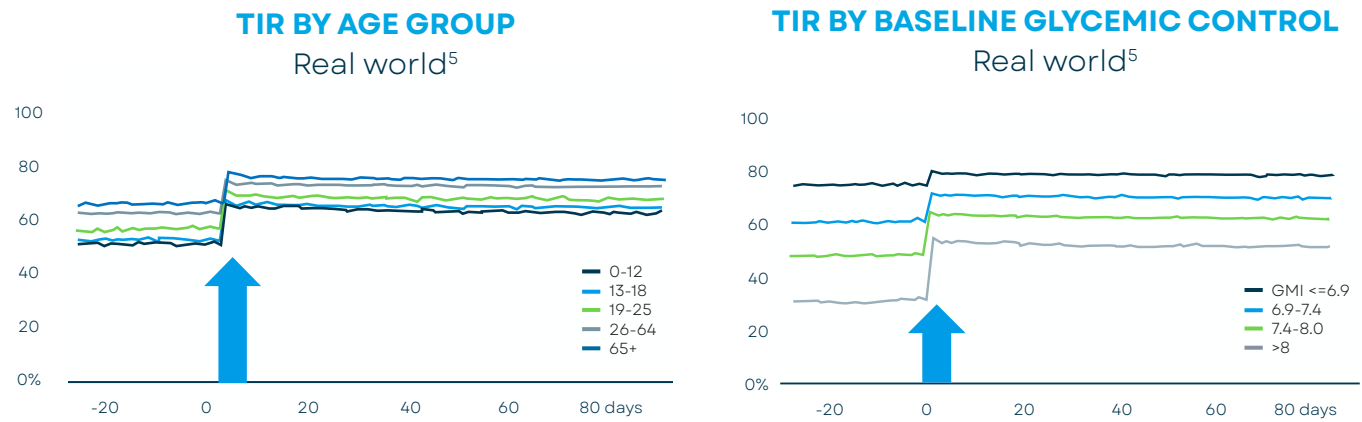
Control-IQ technology predicts and helps prevent highs and lows

Predicts sensor glucose levels 30 minutes ahead to enable proactive basal insulin adjustment every 5 minutes.

Delivers a **true automatic correction bolus**,* up to once per hour, in addition to basal adjustment when glucose levels are predicted to go above the range.

Demonstrated Time in Range Improvements

Across All Age Groups & Baseline Glycemic Control Levels



+2.8

More hours
Time in Range³

Improvements in Time in Range on Day 1³

Consistent result across all age groups, baseline glycemic control level, and ethnicities.

Study participants saw a 13% time in range improvement within the first 24 hours.³



Unique Sleep Activity feature for better overnight control

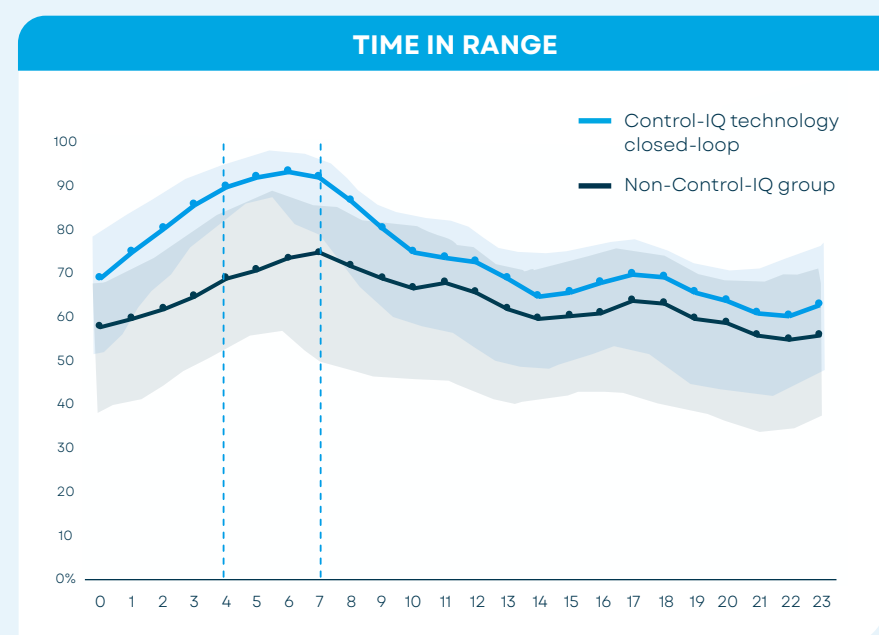
Tighter treatment values for better overnight control

The Sleep Activity setting with Control-IQ technology is designed to improve overnight time in range by narrowing and lowering the range of 6.25–6.7 mmol/L.



Easy to use, proven satisfaction

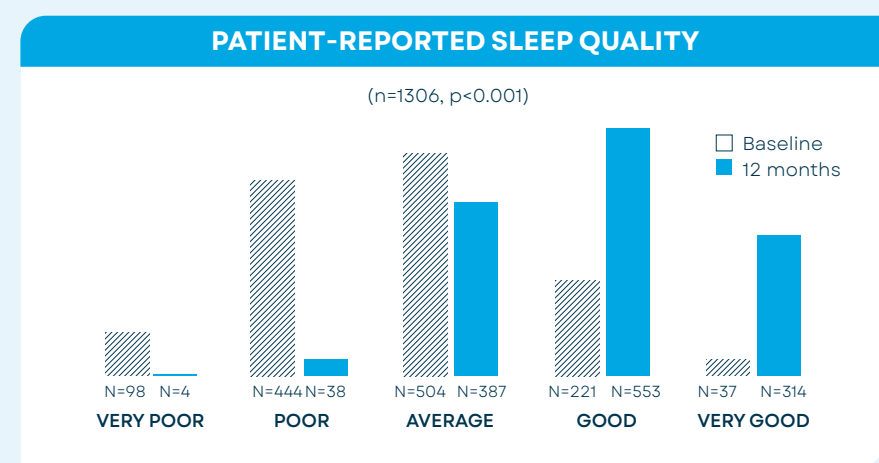
Sleep Activity with Control-IQ technology has the highest satisfaction rate among 8 features from 5 different AID systems⁷



>90%

Overnight time in range

In a 1-year, real-world study of 9,451 users with an age range from 6 to 91 years old, profound TIR increase at night was observed, reaching a median >90% between 4–7 am while using Control-IQ technology.⁴



71%

Patient-reported sleep quality

A significant overall reduction in diabetes impact was observed in a real-world study, and 71% of participants reported improved sleep quality at 12 months.⁶

97%

Easy to use

97% of users said Control-IQ technology was easy to use⁸

GG

The system was easy to learn and is easy to use on a daily basis without much change in my daily process.⁹

- FEMALE, 36 YEARS OLD



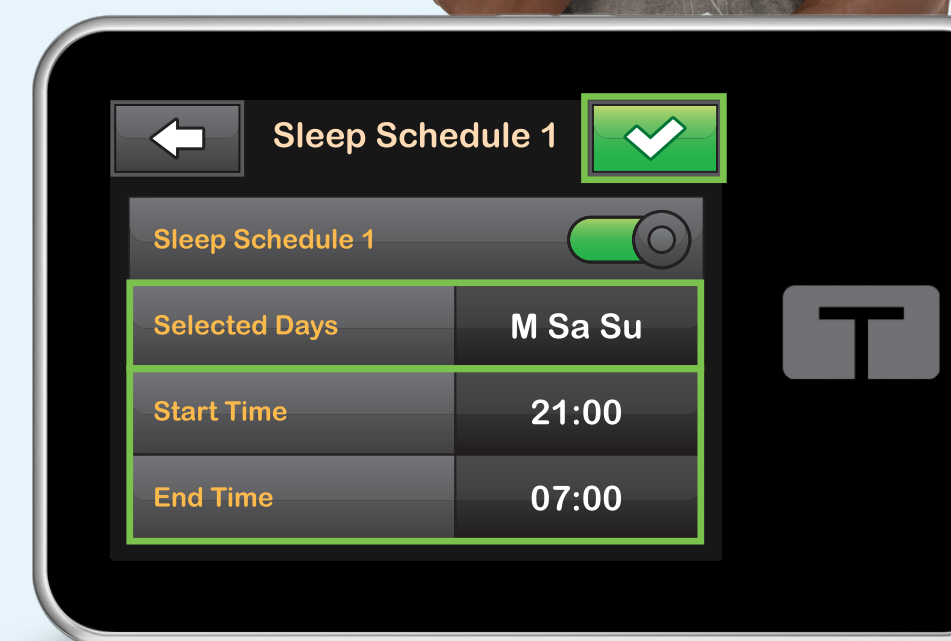
Mide
diagnosed 2012

3 easy steps

to start Sleep Activity

Input only:

- Selected Days
- Time
- Switch on and go



Select the right solution for your patient



Automation and
real-world usage



Designed for
ease of use



Options for
more tailored
treatment

	t:slim X2 pump	Omnipod 5	MiniMed 780G
Predictive algorithm	✓	✓	✗
Automatic correction bolus* in addition to basal adjustment every 5 minutes	✓	✗	✗
Proven real-world results & 240+ million user days ¹⁰	✓	✗	✗
Extended Bolus in hybrid closed loop	✓	✗	✗
On-pump button for Quick Bolus without a controller	✓	✗	✓
Variety of infusion sets for different needs and condition	✓	✗	✓
CGM integration [†]	Dexcom G6, G7	Dexcom G6	Guardian 4 / Simplera Sync
Ability to disconnect from infusion sets without wasting insulin	✓	✗	✓
Rechargeable battery	✓	✗	✗
Remote software updates [‡]	✓	✗	✓
Sleep Activity and Exercise Activity	✓	✗	✗
Options on Personal Profiles and adjusting correction factor for more tailored treatment	✓	✗	✗

Maura
diagnosed 1978





90%

Time in range
from 4-7 am⁴



**Immediate
results
from Day 1³**



97%

Easy to use
rated by users⁸



Rubin Medical AB • Medeon Science Park • Per Albin Hanssons väg 41 • 205 12 Malmö
Tel +46(0)40 15 54 80 • rubinmedical.se/dk/no/fi

NOTE: Individual symptoms, situations, circumstances, and results may vary.

*Bolus defined as a large dose of a drug administered by rapid injection, as opposed to infusion. If glucose values are predicted to be above 10.0 mmol/L, Control-IQ technology calculates a correction bolus using the Personal Profile settings and a target of 6.1 mmol/L and delivers 60% of that value. †CGM sold separately. ‡Future updates for all or some Tandem products may not be developed and may not be offered everywhere and would be subject to applicable regulatory approvals. Software updates are only available to customers who are in warranty at the time they update their pump. Additional training may be required to access certain software updates. Charges may apply. Tandem may discontinue select software and features over time at its discretion.

References: **1.** Griggs, S et al. *J Pediatr Psychol.* 2022;45(4):420-430. **2.** Perfect, MM et al. *Sleep Med Rev.* 2016;16(2):153-165. **3.** Beck RW, et al. *Diabetes Technol Ther.* 2023;25(5):329-342. **4.** Breton MD, Kovatchev BP. *Diabetes Technol Ther.* 2021;23(9):601-608. **5.** Kovatchev BP, et al. *Diabetes Care.* 2022;45(11):2636-2643. **6.** Singh H, et al. *Diabetes.* 2022;71(Supplement_1):281-OR. **7.** EU Patient Voice H1 2024. **8.** Kudva YC, et al. *Diabetes Technol Ther.* 2021;23(10):673-683. **9.** Pinsky JE, et al. *Diabetes Technol Ther.* 2021;23(2):120-127. **10.** As of Oct., 2024. Data on file, Tandem Diabetes Care.

Important Safety Information: The t:slim X2 insulin pump is intended for the subcutaneous delivery of insulin, at set and variable rates, for the management of diabetes mellitus in persons requiring insulin. The pump is able to reliably and securely communicate with compatible, digitally connected devices.

Control-IQ technology is intended for use with a compatible continuous glucose monitor (CGM) and the t:slim X2 insulin pump to automatically increase, decrease, and suspend delivery of basal insulin based on CGM readings and predicted glucose values. It can also deliver correction boluses when the glucose value is predicted to exceed a predefined threshold. The pump is indicated for use in persons six years of age and greater who require a total daily insulin dose of at least 10 units and who weigh at least 25 kilograms. The pump is intended for single patient use. Refer to the User Guide for a list of compatible insulins.

WARNING: Control-IQ technology should not be used by anyone under the age of 6 years old. It should also not be used in users who require less than 10 units of insulin per day or who weigh less than 25 kilograms.

The System is not indicated for use in pregnant women, people on dialysis, or critically ill users. Do not use the System if using hydroxyurea.

Users of the pump and the System must: be willing and able to use the insulin pump, CGM, and all other system components in accordance with their respective instructions for use; test blood glucose levels as recommended by their healthcare provider; demonstrate adequate carb-counting skills; maintain sufficient diabetes self-care skills; see healthcare provider(s) regularly; and have adequate vision and/or hearing to recognize all functions of the pump, including alerts, alarms, and reminders. If your CGM readings do not match your symptoms or expectations, use a blood glucose meter to make diabetes management decisions. The t:slim X2 pump must be removed before MRI, CT, or diathermy treatment. Visit tandemdiabetes.com/safetyinfo for additional important safety information.

© 2024 Tandem Diabetes Care, Inc. All rights reserved. Tandem Diabetes Care, Tandem logos, Control-IQ, and t:slim X2 are either registered trademarks or trademarks of Tandem Diabetes Care, Inc. in the United States and/or other countries. Dexcom, Dexcom G6, Dexcom G7, and any related logos and design marks are either registered trademarks or trademarks of Dexcom, Inc. in the United States and/or other countries. All third-party marks are the property of their respective owners. ML-1015042_A